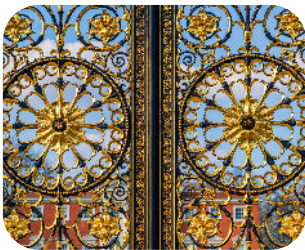
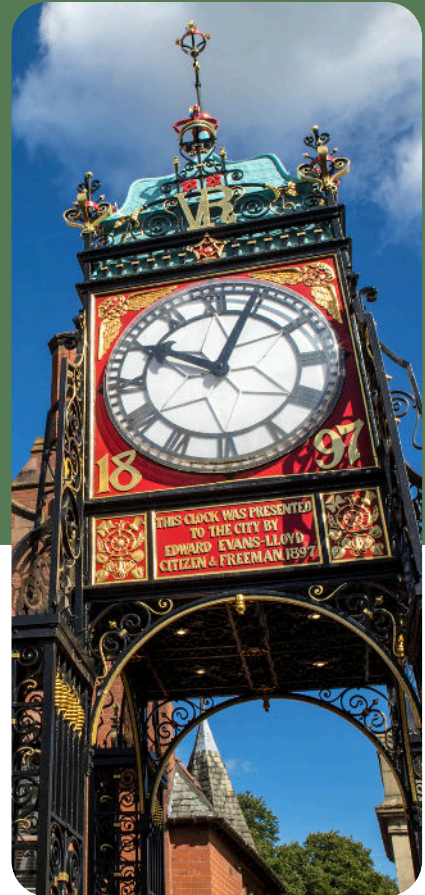


# Cheshire Serious Violence Strategy

2024-2029



01606 364000



[www.cheshire-pcc.gov.uk](http://www.cheshire-pcc.gov.uk)



[pcc@cheshire-pcc.gov.uk](mailto:pcc@cheshire-pcc.gov.uk)

# Contents

Foreword	1
Introduction	2
Cheshire Landscape	4
What do we know about serious violence in Cheshire?	5
Strategic needs assessment	6
Vision, mission and principles	7
<b>Principles</b>	
Principle 1: Taking a public health approach	8
Principle 2: Trauma informed practice	10
Principle 3: Professional curiosity	10
Principle 4 : Evidence and data-led	11
Principle 5: Strategic alignment and sustainability	12
Principle 6: Community co-production and lived experience	12
<b>Our strategic priorities</b>	13
Long-term priorities	14
1: Prevention	14
2: Workforce development	15
3: Intelligence led practice and commissioning	15
<b>Immediate Actions</b>	
Action 1: Early intervention and targeted prevention work to support children at risk of involvement in serious violence	16
Action 2: Targeted work with victims and perpetrators to prevent and reduce crime	21
Communications strategy	25
Monitoring and evaluation	26
Governance and scrutiny	26
<b>Outcome frameworks and measures</b>	27
Strategic priority 1: Prevention (crime)	28
Strategic priority 1: Prevention (education)	31
Strategic priority 1: Prevention (health)	31
Strategic priority 1: Prevention (education and employment)	33
Strategic priority 2: Workforce development	34
Strategic priority 3: Intelligence-led and practice commissioning	35

# Foreword



Cheshire is one of the safest counties in the UK and it can be difficult sometimes to imagine that any serious violence might happen so close to home. However, Cheshire is also one of the larger and more diverse counties; our powerful urban and industrial manufacturing areas are just as much a part of who we are as our picturesque rural farms and villages. And, like anywhere else in the UK, serious violence can and does happen here, so we can't be complacent.

**I'm committed to making sure that any serious violence is prevented.**

The Serious Violence Duty was introduced in the Police, Crime Sentencing and Courts Act 2022 and puts a duty on specified authorities to build a public health approach to understanding the drivers and impacts of serious violence, with a focus on prevention and early intervention.

For Cheshire, that means that many partner organisations work together: *Cheshire Police, Cheshire Fire and Rescue Service, Cheshire and Merseyside ICB, Probation Service, Youth Justice Service, Halton Borough Council, Warrington Borough Council, Cheshire West and Chester Council and Cheshire East Council.*

A significant amount of work is ongoing to ensure that the correct governance is in place to keep these organisations, leaders and partners aligned - keeping Cheshire safe. It's not an easy task, the scope is large and complex, resources are always stretched, but my team and I are committed to making sure this work is a priority.

A handwritten signature in black ink, which appears to read 'Dan Price'. The signature is fluid and cursive, written in a professional style.

Dan Price  
**Cheshire Police and Crime Commissioner**

# Introduction

## Background

The Serious Violence Duty was introduced as part of the Police Crime Sentencing and Courts Act 2022. It requires specified authorities to work together to prevent and reduce serious violence in their local area. This means taking a multi-agency, public health approach to understand the causes and effects of serious violence, developing a strategic response focusing on prevention and early intervention, and monitoring the impact of this preventative work.

The duty requires the following 'specified authorities' within a local government area to collaborate and plan to prevent and reduce serious violence: Police, Probation, Youth Offending Teams, Fire and Rescue, Health and Local Authorities.

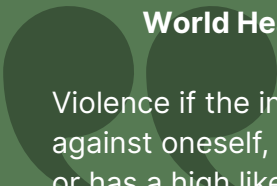
In response to the duty Cheshire has established both strategic and operation boards for serious violence that report into the Local Criminal Justice Board. These boards will bring together partners from across policing, local government, fire and rescue, probation, youth offending and health, as well as the custodial estate and education, to deliver the Serious Violence Duty in Cheshire, and ensure that responses across the county are consistent.

The Police and Crime Commissioner for Cheshire has convening responsibility for the duty and associated grant spend.

The Serious Violence Strategy for Cheshire will cover a five-year period, with annual reviews to reflect on progress against planned outcomes and to update delivery plans against emerging trends.

**Our definition of serious violence**

The duty enables the partnership to determine what constitutes serious violence in Cheshire based on the impact upon the victim and community, prevalence, and maximum penalties imposed. In taking a public health approach our definition is informed by the World Health Organisation definition of violence

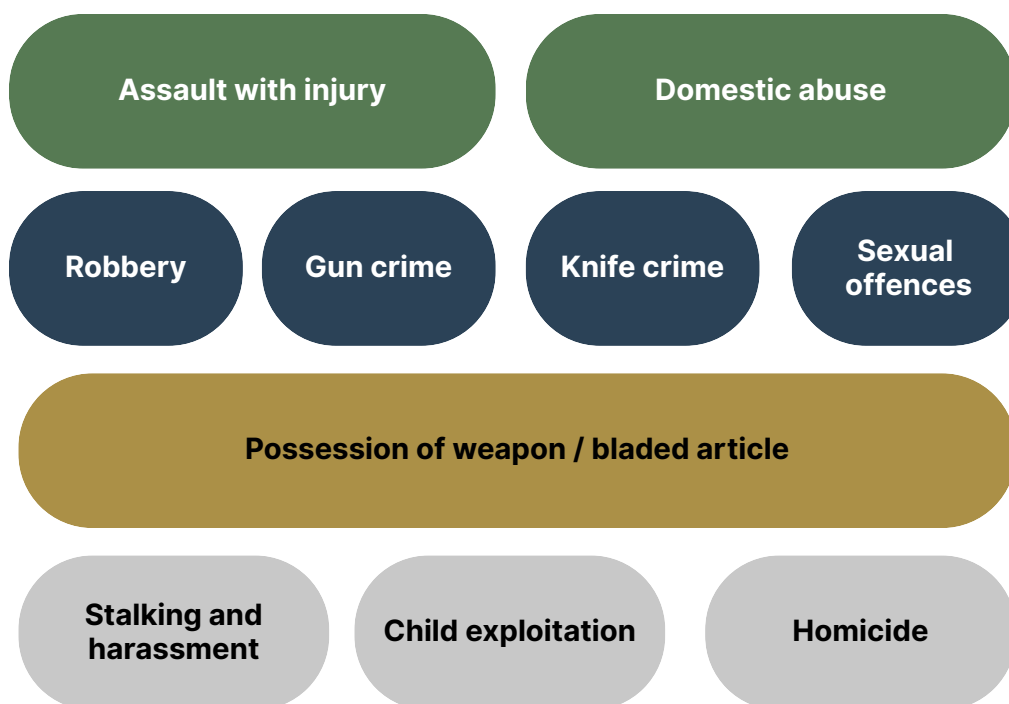


### World Health Organisation - World report on violence and Health (2020)

Violence is the international use of physical force or power, threatened or actual, against oneself, another person, or against a group or community, that either results in or has a high likelihood of resulting in injury, death, psychological harm, maldevelopment, or deprivation.

Serious violence is a broad term that typically incorporates those crime types that result in significant physical or psychological harm to the victim. However, we recognise that we must also consider offending that drives violence within our communities and the impact of exposure to this violence on individuals.

By describing some crime as serious and others not, does not diminish the impact felt by victims, but a broader definition of serious violence allows the partnership to focus on the risk factors affecting our community. As a result of wider partnership consultation and data analysis, the following crime types and descriptors were identified as defining serious violence in Cheshire



## More information

Assault with Injury includes – any offence which results in the victim suffering bodily injury, including serious injury. This category includes physical abuse of children.

Under the Domestic Abuse Act 2021, domestic abuse is defined as any incident or pattern of incidents between those aged 16 or over who are personally connect to each other. This includes people who are, or have previously been married, in civil partnerships or in relationships; or have a child together; or are relatives. Abuse can be a single incident, but it is more often a pattern of behaviours, and it takes many forms including: physical or sexual abuse, violent or threatening behaviour, controlling or coercive behaviour, economic abuse, psychological, emotional, or other abuse.

The Domestic Abuse Act 2021 recognises children under the age of 18 years who see, or hear, or experience the effects of abuse, as a victims of domestic abuse if they are related or have a parental relationship to the adult victim or perpetrator of the abuse. Sexual offences include rape and sexual assaults.

Child exploitation includes sexual and criminal exploitation of young people.

Stalking is defined as “A pattern of unwanted, fixated and obsessive behaviour which is intrusive and causes fear of violence or serious alarm or distress”. Harassment is defined as a form of unwanted and unwelcome repeated conduct that causes the victim to feel alarmed, distressed or harassed.

Homicide includes both terms murder and manslaughter which involves causing the death of another human being as is either an intentional act or a reckless or negligent act.

# The Cheshire landscape

Cheshire offers a combination of diverse landscapes including beautiful countryside, vibrant towns and cities with excellent transport links. The county's economy is also diverse, with a strong presence in manufacturing, logistics, and technology.

With just over one million residents and 500,000 households, Cheshire has seen a significant population increase over the last decade with the average age increasing in rural areas, whilst urban areas, especially in the West of the county, became more youthful.

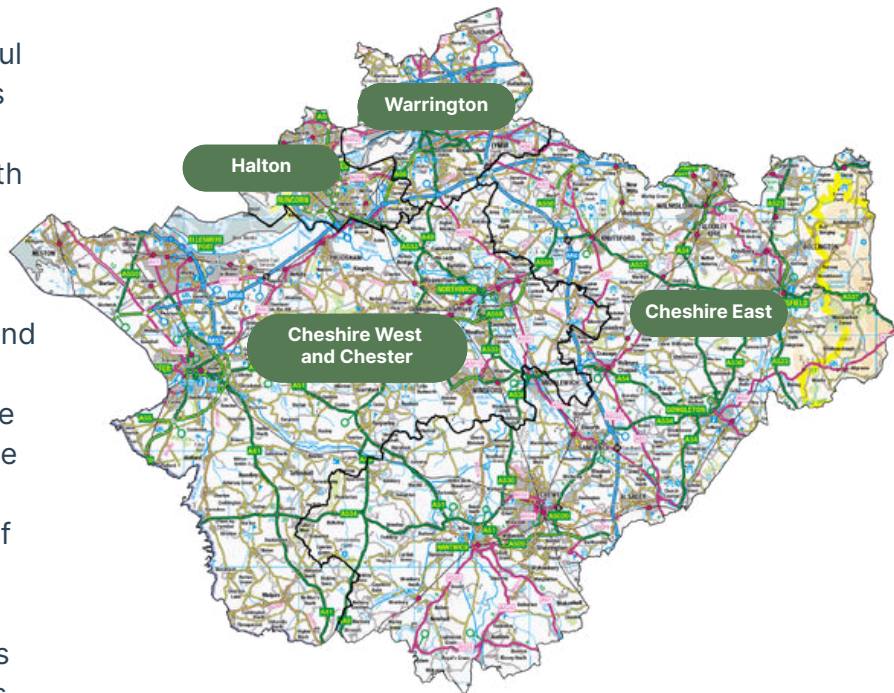
Although Cheshire is diverse in terms of the age and population it is not as ethnically diverse as other areas in England with 92% of residents identifying as 'White British' with the next common group 'All Other White' and 'Asian / Asian British'.

Cheshire is divided into four unitary authorities, which are responsible for delivering local government services to residents and businesses within their respective areas. These four authorities are: Cheshire East, Cheshire West, Warrington, and Halton as illustrated.

Despite being a largely affluent area Cheshire does experience pockets of deprivation which is most notable in the north of the county.

The assessment of deprivation combines several measures which include Income, Employment, Education, Skills & Training, Health and Disability, Crime, Barriers to Housing and Services, and Living Environment.

Like many other regions across the country COVID-19 and the cost-of-living crisis has had a significant impact on our Cheshire population, affecting various aspects of life including health, education, the economy and mental well-being. The full extent and repercussions are still unfolding as levels of crime and need for support services rise across the county.



# What do we know about serious violence in Cheshire?

The most prevalent form of serious violence in Cheshire is stalking and harassment, 14.36 offences per 1,000 of the population, followed by violence with injury, sexual offences, rape, possession of weapons, robbery, and homicide. The rates of stalking and harassment, rape, and sexual offences in Cheshire are above the national average.

A key finding of the Cheshire 2023 Serious Violence Strategic Needs Assessment is the prevalence of domestic abuse as a form and driver of serious violence. While stalking and harassment is the most prevalent form of serious violence in Cheshire, just over a third of incidents (34%) have domestic abuse flags recorded. The extent of domestic abuse flags in other serious violence incidents is also high: 32% of violence with injury incidents, almost 30% of rapes, and 26% of knife crimes had a domestic abuse qualifier recorded.

34%

of incidents have domestic abuse flags recorded

The prevalence of crime in Cheshire is often below the national levels and this is currently the case with offences of robbery, assault with injury, possession of offensive weapon and homicide.

The strategic needs assessment further revealed the extent to which serious violence affects children and young people. Amongst all forms of serious violence explored in the strategic needs assessment, children, and young people under eighteen appear as prominent amongst the victim and offender cohorts for possession of weapon offences and knife crime incidents. Low proportions of sexual offences, robbery, knife crime and perpetrators had age data recorded, however tentative findings show that a large proportion of these offenders are as young as 10-15 years old.

We have however witnessed increases in recorded crime across some of the serious violence crime types in the last twelve months. Some of this can be attributed to increases returning to pre Covid levels but we must also take account of the increasing policing activity to target those that harm, with a particular focus on domestic abuse and possession of a knife. The partnership has also worked collectively to improve the trust and confidence of people who have been affected by crime and serious violence to encourage reporting of crime.



# Strategic Needs Assessment

## Who?

**25-29** year olds committed the highest number of violent / knife and sexual offences

**78%** of perpetrators of knife crime were aged under 24

The largest proportion of stalking / harassment and sexual offences were committed by ex-partners, acquaintances of family members

**41%** of sexual assault victims were aged between 10-15

## What?

### Homicide

Homicide rates in Cheshire remain one of the lowest in the country

### Rape

Domestic abuse features in **30%** of rape, stalking and harassment offences

### Offensive weapons

Majority of offenders identified as male between **16-19** and **25-49** years old

### Domestic Abuse

One in three violence with injury offences had a domestic abuse flag

### Youth related violent crime

**10%** of sexual offences, robbery, possession of weapons and violence with injury were flagged as **youth related**.  
**73%** of the youth justice cohort have committed violent offences

### Assault with injury

**11% rise** in assault with injury  
**27%** of ambulance emergency call outs were flagged as 'Assaults and Violence'

## Why?

### Education

**50%** under youth justice supervision had experience some form of school exclusion

### Trauma

Up to **73%** of the young offenders had been victims of violence prior to own offending

### Education

Persistent absences, exclusions and pupil enrolments with one or more suspensions have all increased over the last academic year

### Deprivation

Parts of the county amongst the **10%** most deprived areas in the country

### Deprivation

Has worsened with higher levels of children living in **income deprived families**

### Substance misuse

Alcohol flags were recorded in **9-15%** of violence with injury, rape, sexual offences and knife crime

### Substance misuse

Substance misuse needs have been identified amongst both **serious violence offenders and looked after children**

# Vision, mission and principles

## VISION

Cheshire is a place where communities feel safe from crime, violence and the fear of violent crime.

## MISSION

To work in partnership to prevent and reduce serious violence across Cheshire.

## PRINCIPLES

Our priorities and activity of work will be underpinned by the following principles so that a multi-agency whole system approach is embedded within the partnership.



**Taking a Public Health approach**

**Trauma informed practice**

**Professional curiosity**



**Evidence and data-led**

**Strategic alignment and sustainability**

**Community co-production and lived experiences**

# Principles

## Principle 1: Taking a public health approach

Partners in Cheshire are committed to adopting a public health approach to respond to serious violence. This means taking a whole-system multi-agency approach to preventing serious violence that is place-based, evidence-led and incorporates public health principles.

A public health approach is underpinned by five key partnership ways of working:

**Collaboration**

**Co-production**

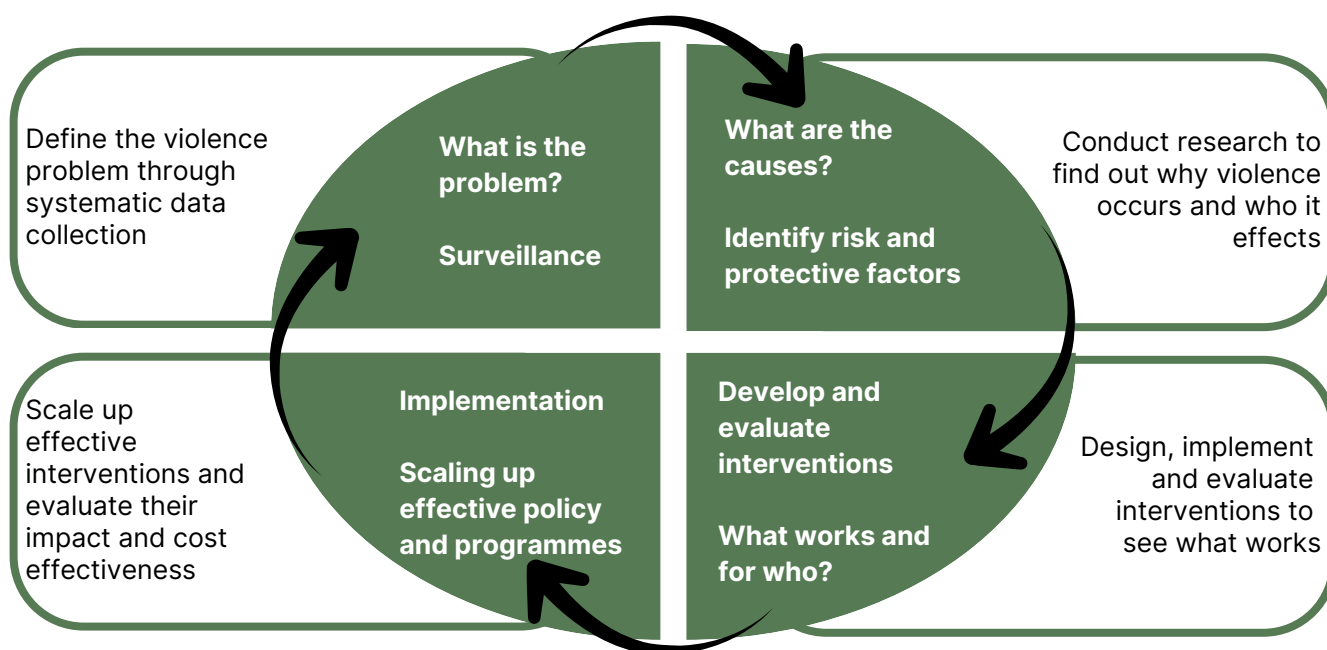
**Co-operation on data and intelligence sharing**

**Gathering community consensus**

**Developing a counter-narrative response**

The public health process involves a cyclical process comprising four key stages of work.

### The steps of a public health approach.<sup>1</sup>

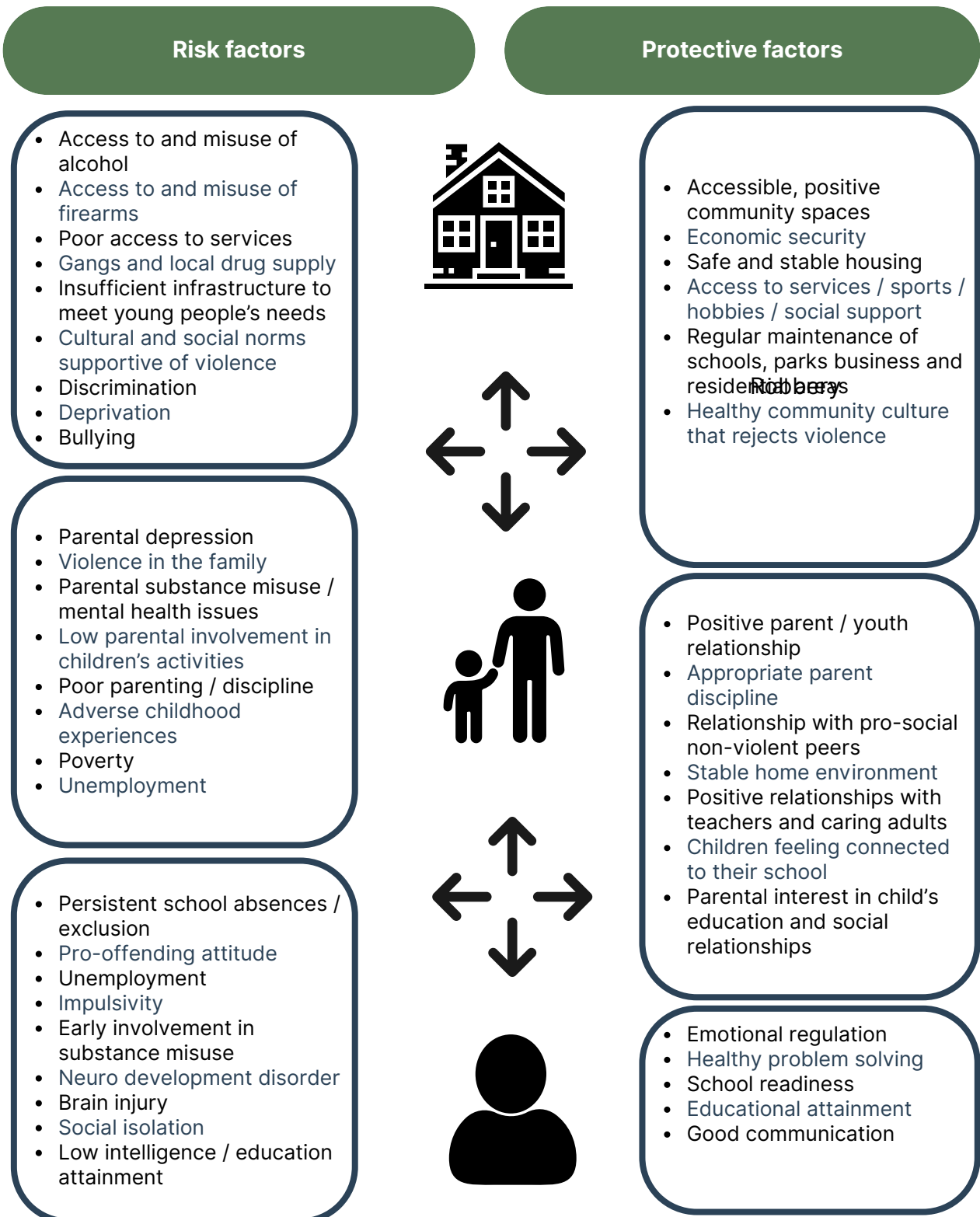


When identifying risk, it is essential that we understand both the risk and protective factors that can impact on the prevalence of violence within our Cheshire communities. In doing so we are in a far better position to prevent violence by increasing those protective factors and ensuring our strategies and interventions support the implementation of both universal and targeted interventions.

<sup>1</sup> World Health Organisation (W.H.O) *The steps of a public health approach.*  
[https://www.who.int/groups/violence-prevention-alliance/approach.](https://www.who.int/groups/violence-prevention-alliance/approach)

The preventable nature of violence makes it well-suited for a public health approach, with a strong emphasis on addressing the “causes of causes.” Furthermore, violence shares many characteristics with other significant public health issues. There are wide disparities in the prevalence of violence, with the most deprived communities suffering the greatest effects.

Additionally, violence has a cyclical nature, meaning that “much like many infections, violence is contagious.”<sup>2</sup> For instance, there is a strong understanding that exposure to violence in childhood (along with other adverse childhood experiences) increases the risk of an individual becoming involved in violence later in life as either a victim or perpetrator.



<sup>2</sup> Gary Slutkin - Violence Is a Contagious Disease: Theory and Practice in the USA and Abroad, 2020.

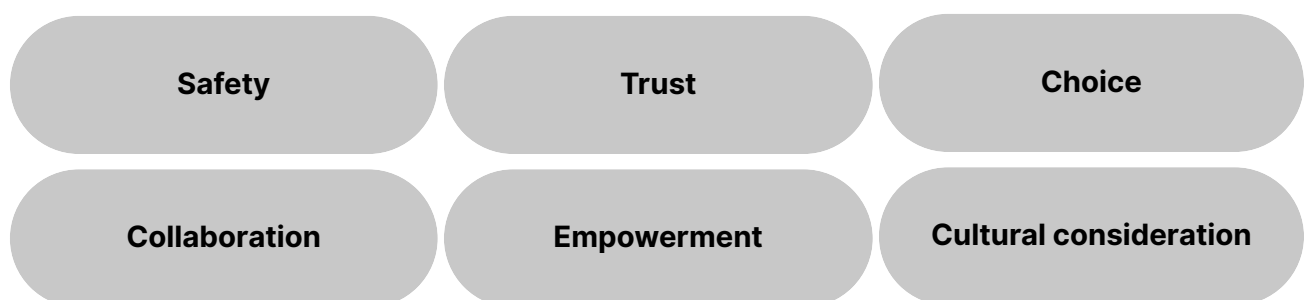
In adopting a public health approach, the partnership will focus on early intervention as well as targeted diversionary activity and address the root causes of serious violence. A public health approach promotes commissioning based on evidence of what works, ensuring that the local response to serious violence is sustainable in the longer term.

## Principle 2: Trauma informed practice

People who experience significant trauma, particularly in their early years, are at a higher risk of suffering with poor mental health and emotional wellbeing. They are also more likely to adopt anti-social and self-harming behaviours, including, poor school attendance, exclusion, and involvement in serious violence.

Partnership work to prevent and reduce serious violence in Cheshire will be underpinned by a trauma-informed approach. A trauma-informed approach to serious violence work is one which realises that trauma can affect individuals, groups, and communities, recognises the signs, symptoms and widespread impact of trauma, and prevents re-traumatisation.

**The key principles of trauma-informed practice are<sup>3</sup>:**



## Principle 3: Professional curiosity

Professional curiosity is commonly associated with not accepting information at face value and seeking further information. Ultimately, using professional curiosity will ensure that any judgements and decisions made are based on the evidence available at the time. It will ensure that this evidence has been verified, and critically evaluated, to ascertain its validity. This critical evaluation considers individual characteristics, power dynamics, motives, risks, and strengths to ensure the most effective outcome.

It is important that practitioners, managers, and senior leaders have a common understanding of exactly what the term 'professional curiosity' means, especially if we are encouraging people to use this skill. A shared understanding will help people to discuss the skill and use it effectively.

<sup>3</sup> Office for Health Improvement and Disparities, *Working definition of trauma informed practice*, November 2022

## Principle 4: Evidence and data-led

The partnership is committed to adopting an evidence led approach that is underpinned by effective data sharing and robust analysis. By sharing data and information in a timely and effective way we will strengthen our analytical capability to enable robust analysis and ensure a holistic understanding of local need and demand. This understanding will be used to review the current strategy and inform future priorities for the partnership.

With this focus, the partnership will look to achieve the following outcomes:

- Information sharing is timely, proactive and supported by information sharing agreements where required, enabling a responsive and evidence-based approach.
- Data capability and functionality are enhanced and improved, including in the monitoring and evaluation of ongoing work.
- The available evidence base on 'what works' to reduce serious violence is used to influence commissioning decisions under priority areas identified. Where no or limited evidence exists, the Partnership will evaluate interventions in order to contribute to the evidence base, incorporating learning of evaluations into future commissioning.
- Learning from reviews undertaken locally, including Domestic Homicide Reviews, Safeguarding Adult Reviews and Local Safeguarding Practice Reviews are used to inform the continuous development of the local response. Examples of effective working and good practice are shared throughout the partnership.
- Data gaps and disparities identified in the strategic needs assessment are remedied, to allow a more sophisticated picture of emerging trends to be built. These gaps centre particularly around geographic and demographic data.
- Data is used to support the early identification of target cohorts - especially of young people at risk of involvement in serious violence.
- Disproportionality at both the individual, community and societal levels are measured effectively and understood.
- Data and evidence are gathered relating to additional cohorts over-represented amongst those affected by serious violence. This includes Adults at Risk and older people. Understanding of the characteristics of these groups and their vulnerabilities will allow expansion of targeted cohorts in future iterations of the strategy, if necessary.

## Principle 5: Strategic alignment and sustainability

There are a number of partnerships, groups and forums in Cheshire that have strategic overlap with the priorities and target outcomes set out in this strategy to prevent and reduce serious violence. To deliver a cohesive and effective response to serious violence locally, the partnership will seek opportunities to collaborate with these aligned groups and workstreams - identifying areas of overlap, opportunities for joint commissioning and delivery, and minimising the risk of duplication.

All local authority Community Safety Partnerships (CSPs) include serious violence as a priority area, with focuses on the '4 Ps' approach (Prevent, Pursue, Protect, Prepare) to tackling serious violence. This strategy will be used to support the CSPs in working to prevent people from causing serious violence, detect and prosecute those causing serious violence, recognise the causes of serious violence and reduce risk, stop serious violence and mitigate its impact.

Local partnerships in Cheshire are also working to combat substance misuse and Violence Against Women and Girls (VAWG). These areas have relevance to work to prevent and reduce serious violence offending. For example, work around VAWG focuses on pursuing those who initiate VAWG, making the night-time economy and public places safer for women and girls, preventing VAWG through educational initiatives, supporting victims of stalking and harassment, and reducing the fear of VAWG locally. Objectives to combat substance misuse include preventing people from being harmed by drugs or alcohol, improving information sharing between partners on at-risk individuals, working to make the night-time economy safer, disrupting drug markets, and improving rehabilitation and treatment service provision.

This strategy has also sought to align its performance framework with relevant national and local performance measures and expectations. Notably we have cross referenced and incorporated much of the criteria set out by Government inspectors when evaluating the multi-agency response to serious youth violence

All local authority Community Safety Partnerships (CSPs) include serious violence as a priority area, which focuses on the '4 Ps' approach: **Prevent, Pursue, Protect, Prepare**

## Principle 6: Community co-production and lived experience

Co-production is about a collaborative approach to service delivery and involves communities, service users, professionals, and other stakeholders working together as equal partners to design, deliver, and evaluate services. It is based on the principle that service users are not passive recipients of services but rather active participants with valuable insights that can contribute to the improvement of services leading to better outcomes.

Together as a partnership we will build on existing engagement opportunities to ensure that co-production is representative of our communities, is accessible to everyone and creates a culture of openness and honesty that shapes our understanding of serious violence across Cheshire

# Our strategic priorities

Our strategic priorities are intended to set out long-term and immediate plans to prevent and reduce serious violence in Cheshire. The immediate actions being targeted to address the areas of need and vulnerability highlighted in the 2023 strategic needs assessment. These action plans will be reviewed on an annual basis and flex with any changing needs or emerging trends within our evidence base.

## Long term priorities

1. Prevention
2. Workforce development
3. Intelligence-led practice commissioning

## Immediate actions

1. Early intervention and targeted preventative work to support children at risk of involvement in serious violence.
2. Targeted work with perpetrators and victims to prevent and reduce domestic abuse related serious violence.

# Long term priorities

## Priority 1: Prevention

A public health approach requires a whole system approach that looks to prevention to build and increase the resilience of our communities which reduces the risk of individuals becoming a victim or perpetrator of serious violence. This also includes taking effective enforcement action through the criminal justice system against those that harm others and seize opportunities to protect and prevent violence.

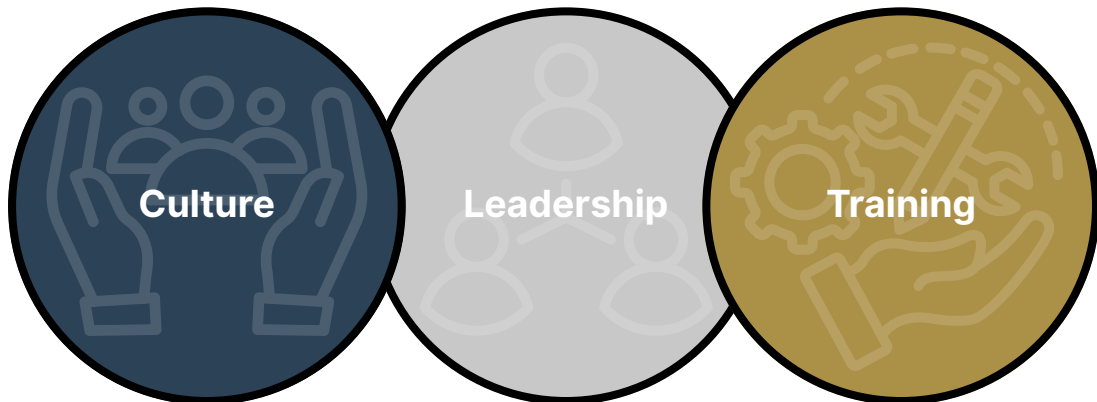
There are three distinct areas of prevention which are listed below.

Primary, secondary and tertiary interventions		
<b>Primary prevention</b>	Focuses on a 'low risk' cohort of individuals with no or few risk factors. Prevention (universal) services aim to stop risk factors emerging or promote protective factors to mitigate against them.	For example, healthy relationships in schools.
<b>Secondary prevention</b>	Focuses on an 'at risk' cohort of individuals who have started to become involved in violence or with a number of risk factors that might lead to violence. Early intervention (targeted) services address risk factors and prevent an emerging problem from becoming established.	For example, one-to-one support for at risk groups.
<b>Tertiary prevention</b>	Focuses on a 'high risk' cohort of individuals currently in the criminal justice system or at risk of offending in the short to medium term. Reduction (targeted) services manage an ongoing problem to reduce harm, focusing on reducing offending and reoffending within a known cohort.	For example, recovery support for victims and perpetrator programmes.

The partnership is committed to taking a whole-family approach. An important part of this is listening to, and engaging with, children, young people and their families to understand their experiences and the impact that actions and interventions coordinated by the partnership have made. The partnership will use this insight to continuously improve service provision and delivery

## Priority 2: Workforce development

We plan to promote and facilitate opportunities for our workforce to work and train in partnership. Our approach to workforce development will be to promote greater collaboration and help develop a wider understanding of the contribution each agency can make to the prevention of serious violence. Supported by the senior leaders of each specified agency we hope to develop a workforce culture that is trauma informed, professionally curious and evidence led.



## Priority 3: Intelligence-led practice and commissioning

The partnership is committed to sharing data and information in a timely way and strengthening its analytical capability to enable robust analysis and ensure a holistic understanding of local need and demand. This understanding will be used to review the current strategy and inform future priorities for the partnership.

We will seek to promote and use evidence based best practice to reduce serious violence across the partnership and in informing our commissioning decisions. Investment in analytical capability that can support qualitative evaluation of interventions is essential to the partnership's understanding of serious violence. Coupled with feedback of those with lived experience it will allow us to adopt the EMMIE framework (Effect, Mechanism, Moderators, Implementation, and Economic Cost)<sup>4</sup> to measure our success, impact and decision making on future commissioning.

To support this approach, we will develop a centralised mapping functionality, to improve partners awareness of existing provision and look to improve signposting and referral to relevant programmes, interventions, and support.

We also plan to invest in resources to improve data understanding and analysis to support practice and inform commissioning decisions.

<sup>4</sup> Introducing EMMIE: an evidence rating scale to encourage mixed-method crime prevention synthesis reviews. Johnson, Tilley and Bowers 2015

# Immediate actions

## Action 1: Early intervention and targeted preventative work to support children at risk of involvement in serious violence

Children are disproportionately represented in the victim and offender cohorts for serious violence offences in Cheshire. The largest proportion of robbery, arson and sexual offence perpetrators were in the 10-15 age cohort. Almost three quarters of the local youth justice cohort have committed a violence against the person offence, followed by 17.6% who committed a sexual offence.

Children are targeted for criminal and sexual exploitation by organised crime groups, including county lines activity. There has been a significant increase in the identification of county lines networks in Cheshire from 2021/22 to 2022/23, and a significant proportion of these networks were linked to child criminal exploitation.

Early exposure to violence, childhood deprivation and neglect can have an impact on children's vulnerability to involvement in serious violence. Modelling undertaken by the Children's Commissioner estimates that over 2000 children in Cheshire are affected by factors including domestic abuse, parental substance misuse and mental health problems. Early intervention and targeted prevention activity around known risk and vulnerability factors for children's involvement in serious violence supports a public health approach. Consistent engagement with education is widely considered to be a protective factor against children's involvement in serious violence and the transition from primary to secondary school is a key opportunity for intervention.



## How will we achieve this?

### **Ensure that more young people in Cheshire receive universal educational and preventative initiatives related to serious violence.**

Universal service provision and primary intervention activity is integral to a public health approach to serious violence. This means taking a proportionate approach to ensuring that children and young people in Cheshire are taught about the harms, risks and consequences of serious violence - even before they are identified as 'at-risk'. The existing and planned activity set out below - including work with schools and local authorities - will drive progress against this outcome.

### **Improve the timeliness of identification and referral to support for children and young people who are at risk of involvement in serious violence.**

Early identification of children and young people who are at risk of involvement in serious violence is important to ensure they are connected with the appropriate support in a timely way. Existing and planned partnership activity to improve early identification and ensure preventative interventions are available for children and young people who are at risk is key to achieving this outcome. These interventions will incorporate a whole-family approach.

### **Support children and young people who have experienced serious violence, either as perpetrators or victims, through targeted interventions.**

The partnership will ensure that preventative and early intervention work for children and young people forms part of a suite of responses, with tertiary interventions and support in place for children at the acute end of offending (for example, county lines involvement and use of offensive weapons). Tertiary prevention is designed to support high-risk children and young people who are already known to the criminal justice system, and prevent re-offending, and / or involvement in more serious violence offending.

### **Improve the participation and engagement of children, young people and their families in the work of the partnership.**

The partnership will proactively seek out and listen to the voices of children, young people and their families to understand their concerns around and experience of serious violence and what support or activity they would find most beneficial. This insight will be incorporated into reviews of the partnership strategy and response to serious violence to ensure that commissioning meets local need.

### **Some of the current activity and delivery under this priority across Cheshire is detailed in the following tables**

## Primary

School educational programme on respect and interpersonal skills- to tackle domestic abuse and violence against women and girls.

RESET programme education teenagers of the early warning signs of domestic abuse.

'Designing out' crime: street lighting, safety buses, CCTV, alcohol licensing.

School education awareness sessions including topics on serious youth violence, including gangs, knife crime, exploitation, drugs and alcohol, anti-social behaviour and internet safety.

Trauma informed training.

Cheshire Police and Crime Commissioner's Youth Commission is a forum for gathering the lived experience of young people.

There is an active Youth Senate (15 youth senators and two members of Youth Parliament) who can support initiatives and consultations.



## Secondary

Cheshire Fire and Rescue youth outreach in hot spot areas.

Local authorities use Early Help Assessments to identify children who might be at risk and connect them with appropriate support.

Local authorities provide a variety of programmes and activities jointly with the police - including boxing, dance workshops, climbing, football, and other sporting activities. These interventions are designed to move at-risk children and young people away from involvement in criminality through engagement in positive activities.

'Kops and Kids' - encourages children to play sports whilst making connections with police officers, and Volunteer Police Cadets which gives young people aged 15-17 the opportunity to get an insight into community policing.

Cheshire Fire and Rescue - Prince's Trust Team Programme, a personal development course for young people aged 16 to 25 who are not in education, employment, or training (NEET). The programme seeks to improve young people's employability, confidence, teamwork skills and self-esteem, whilst gaining a nationally recognised qualification.

Cheshire West and Chester -Pilot early intervention programme to prevent exclusion.

Troubled family scheme.

Work is also ongoing through the Youth Justice Service to capture the voices of young people.



## Tertiary

The Youth Justice Service takes referrals for 1:1 work with children and young people on their 'Turnaround Programme' as part of the wider Diversion scheme.

Cheshire-wide diversion project is working to reduce the number of Juvenile First Time Entrants to the criminal justice system and incorporates health assessment and psychosocial intervention as an alternative to prosecution.

Complex Youths is a service which works with children with developing patterns of criminality, often linked to County Lines.

Queensberry services offer interventions for the high-risk cohort (including mentoring programmes), referred through schools or contextual safeguarding teams.

The Fire and Rescue Targeted Youth Support Team works with children involved in anti-social behaviour. The Team works with primary and secondary school-aged children referred by their schools, often known to police or support services, and supports them to engage with education.

The police, youth justice service and local authorities work together to put in place restorative justice programmes for young people.

Local authorities gather service user feedback of commissioned services, and have Youth Cabinets.



## Action 2: Targeted work with victims and perpetrators to prevent and reduce crime

Rates of serious violence related to domestic abuse are high in Cheshire. Stalking and harassment represents the largest proportion of serious violence offences in Cheshire, and over one third of stalking and harassment incidents had a domestic abuse flag recorded. Notably, 32% of violence with injury incidents, almost 30% of rapes, and 26% of knife crimes also had a domestic abuse flag recorded.

The largest proportion of stalking and harassment offenders are male, and are most frequently aged between 35 to 49, followed by 25 to 34. Victims are most often female, and aged 35 to 49, followed by 25 to 34. A significant number of people supported by children's social care and early help services are victims or perpetrators of domestic abuse.

Childhood experiences of witnessing domestic abuse can create a cycle of generational abuse and trauma within families. Research shows that children living in households with an adult experiencing mental ill-health or domestic abuse were more likely to be a victim of crime, experience violent crime, and be a victim of bullying.<sup>5</sup>

### How will we achieve this?

The actions and desired outcomes under this priority are focused on preventing reoffending and reducing the harm caused by domestic abuse perpetrators - particularly repeat and serial perpetrators - as well as reducing the harm experienced by victims. These outcomes will be met through existing perpetrator interventions and risk management, and whole family support for victims.

#### **Manage risk and reduce harm associated with serial domestic abuse perpetrators through appropriate support and preventative interventions.**

Activity will be focused on managing the risk and reducing the harm caused by serial domestic abuse perpetrators. A key part of meeting this outcome is improving identification of the target cohort, ensuring effective risk management, and facilitating engagement in interventions and support.

#### **Ensure tailored and accessible support is available for victims of domestic abuse, including children and young people.**

The provision of accessible and tailored support for victims of domestic abuse will be focused on harm reduction and in particular reducing repeat victimisation. Interventions take a whole family approach, which encourages practitioners to look at the whole family wellbeing in the context of domestic abuse. Work is ongoing to improve awareness of the signs, risk factors and harms associated with domestic abuse, to encourage reporting and ensure victims are connected with support.

Some of the current activity and delivery under this priority across Cheshire is detailed below:

<sup>5</sup> Office for National Statistics, Childhood vulnerability to victimisation in England and Wales: year ending March 2017 to year ending March 2019. 2020

## Primary

**Safe and Together training** for professionals, focuses on developing the understanding of coercive control on children and promotes a 'whole family' approach in addressing domestic abuse.

**Spotlight Project** - youth programme of events for young people.

**School education programme** – school education programme delivered by Perception theatre company, focusing on knife crime, exploitation, anti-social behaviour, and online crime vulnerability.

**Warrington Youth Zone** – Warrington, purpose-built youth centre offering a range of activities for young people ranging from sports, activities, music.

**Healing Together Programme** - provides emotional support to young people affected by domestic abuse.

**Positive Vibes Programme (PVP)** - works with young people to build learning and resilience to make informed positive life choices.

**Mental Health Support Team (MHST)** – in schools.

**Honour based Abuse and harmful practice training** - Savera UK - Delivery of awareness sessions to front line staff / campaigns/ education in schools and support to victims.

**Police / Fire cadet schemes.**

**Safer streets programme Guardianship training** - bystander training for community workers.

**Hollie Guard Personal Safety app.**

**Behaviour Change programme training** – provide teachers with the confidence and competence to engage with children and young people about consent, healthy relationships and sexual misconduct.

**Lime Culture** - Sexual Safety Liaison Officer who works with teachers to support students with sexual behaviour issues.

**Lime Culture** - Community bystander training for professionals working in the beauty and wellbeing sector.

## Secondary

**RESET** - Child to Parent domestic violence behaviour change programme, which encourages young people to adopt healthy relationship behaviours.

**Engage** – Whole family domestic abuse programme including support, behaviour change and parenting programme.

**Remedi** provides a full-time young victim practitioner via their Got Your Back Programme.

**The National Centre for Domestic Violence** – free domestic abuse and violence emergency legal protection.

**Open the Door campaign** aims to raise awareness about the signs of domestic abuse, how to support a loved one, and how to get support.

**Serial domestic abuse co-ordinators** – Police officers targeting high harm perpetrators.

**The Safe Lives model** used in Warrington incorporates a whole person approach. Specific programmes provided in Warrington include young people victim advocate champions, child-parent violence advocates, therapeutic interventions, and emotional support for young victims of domestic abuse.

**Vulnerability and Safeguarding Team** in police call centre offering immediate first line support for vulnerable victims.

**Cheshire Fire - Targeted youth support and Princes Trust programme** – improves skills, confidence, and education / employment engagement.

A photograph of a young child with dark hair, wearing a green and white plaid shirt, sleeping peacefully in a bed. The child is holding a light-colored teddy bear. The room is dimly lit, with a soft light source visible in the background.

# 1 IN 5 CHILDREN

Have lived with an adult perpetrating domestic abuse.

## Tertiary

**HMPPS** deliver domestic abuse perpetrator programmes and 1:1 offender management.

**My CWA (formerly Cheshire Without Abuse)** provides the Cautioning and Relationship Abuse (CARA) programme. An early intervention tool targeting perpetrators in the criminal justice system. Custody suite intervention to perpetrators via workers situated alongside custody staff.

**Multi-Agency Public Protection Arrangements (MAPPA)** are in place to assess and manage risk posed by violent and sexual offenders.

**PSS (Person Shaped Support) Turnaround** - supports women who have offended access a whole range of practical and emotional support to help break down any barriers to reform.

**Independent Domestic Abuse Advisors** - within police custody, community and hospital locations in Cheshire supporting victims and perpetrators of domestic abuse.

**Drive- Embedded Harmful Behaviour Case Managers** - working intensively with high risk/harm perpetrators of domestic abuse who have a child open to Child in Need/ child protection.

**Multi-Agency Risk Assessment Conferences (MARAC)** - bring together key partners to manage risk and safeguard victims.



# Communication strategy

Our communication will focus on keeping partners and the public informed of the activity taking place to deliver on the priorities and actions detailed in this strategy. We will use internal channels of communications to promote effective dialogue between partners, reduce siloed practice and prevent duplication. We recognise the importance of also having good external channels of communication around the partnership response to serious violence to ensure transparency around actions and priorities.

We are committed to:

- Providing a clear and accurate account of serious violence within Cheshire that aims to prevent and reduce serious violence.
- Identifying opportunities for localised engagement with young people and communities.
- Understand barriers in engagement and make best use of appropriate communication methods to engage communities and stakeholders.
- Adapt and evaluate our communication to check it meets the specific needs of the community.
- Engage partners of specified and relevant authorities to establish and maintain strong community links to secure long term sustainable engagement.

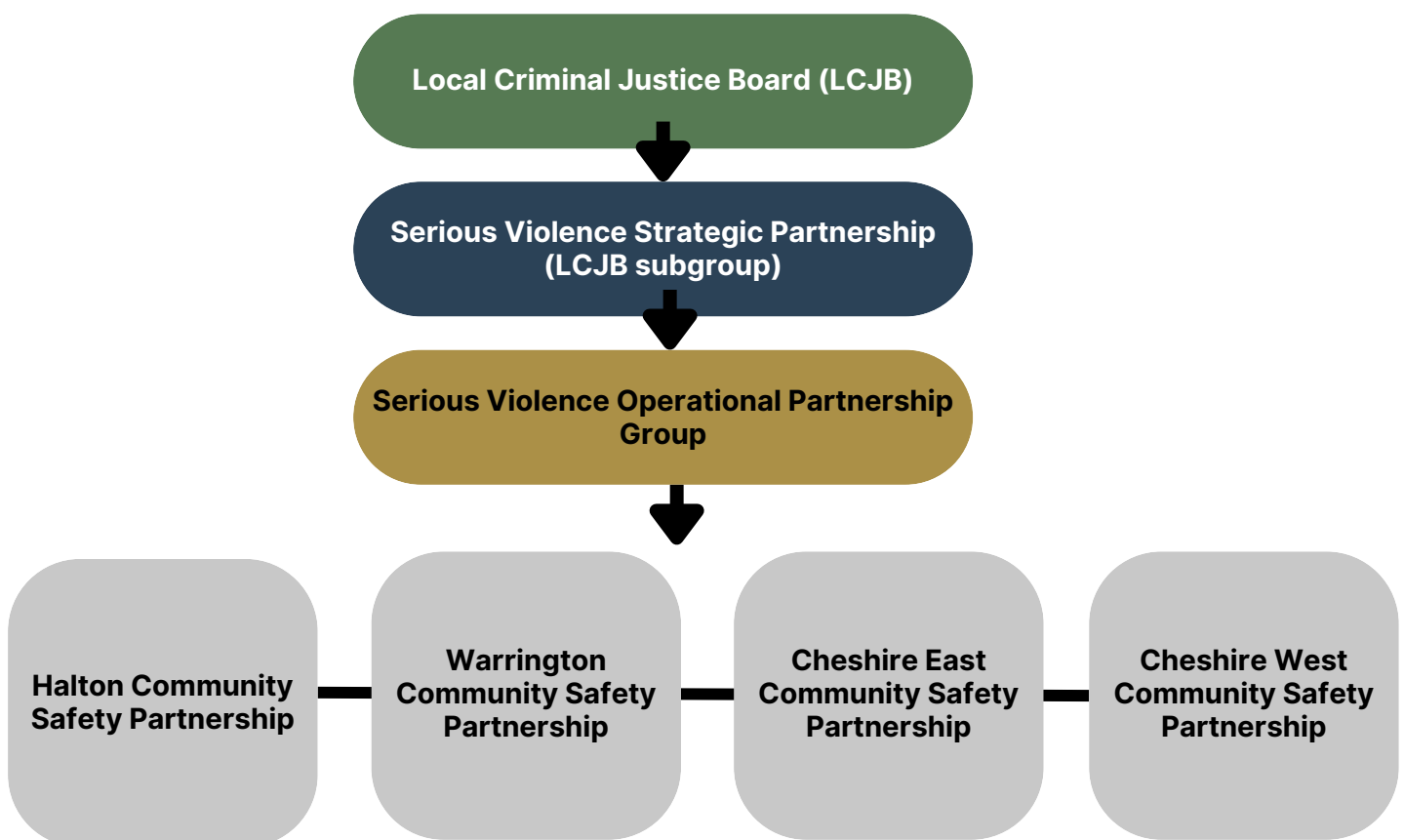


# Monitoring and evaluation

## Governance and scrutiny

The Strategic Serious Violence Reduction Partnership will provide governance and scrutiny of the strategy, its priorities, actions and effectiveness. The partnership will carry out quarterly monitoring of inputs, activities and outputs that will be reported to the Criminal Justice Board and Community Safety Partnerships. The Operational group will be responsible for the co-ordination of varying workstreams that align to the strategic priorities but that may sit within alternate strategic partnerships. Equally we will ensure that the membership of both the strategic and operational group is representative of the relevant and specified authorities, to maximise opportunities for the implementation of the priorities.

All commissioned interventions will be subject to formal evaluation and be subject to review and scrutiny of the Board, with oversight from the Police and Crime Commissioner via the Local Criminal Justice Board on a quarterly basis.



All local authorities have both Children and Adults Safeguarding Boards and a Drug Partnership Board.

# Outcome framework and measures

Under the Serious Violence Duty the Home Office have stipulated the following measures of success:

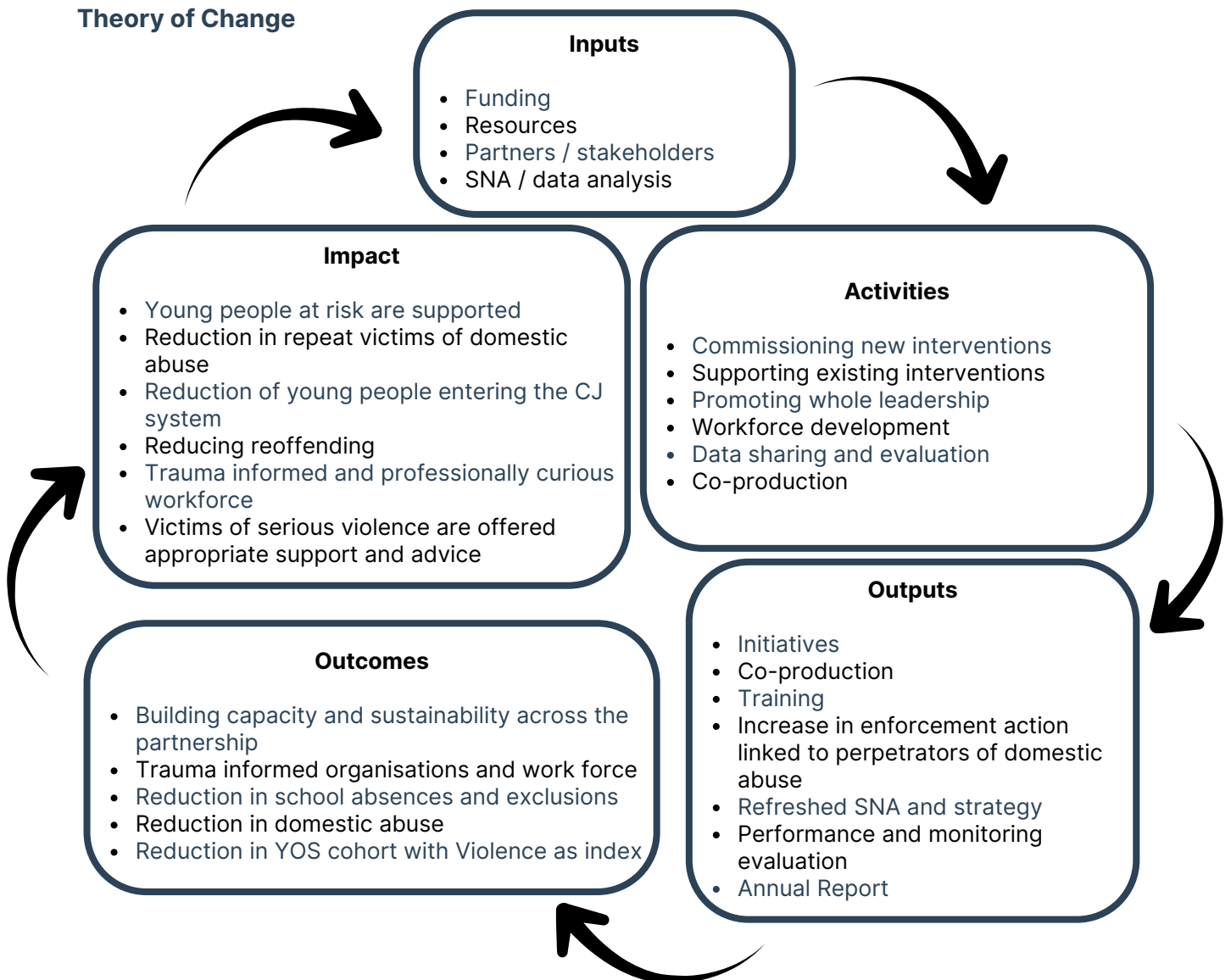
**A reduction in hospital admissions for assaults with a knife or sharp object.**

**A reduction in knife and sharp object enabled serious violence recorded by police.**

**A reduction in homicides recorded by the police.**

In addition, the partnership will work collaboratively to assess and monitor the impact of our work and to measure out short- and long-term success. These successes will be monitored through our Theory of Change Model and Performance Framework which will allow us to track our progress and activities.

## Theory of Change



All local authorities have both Children and Adults Safeguarding Boards and a Drug Partnership Board.

## Strategic priority 1: Prevention (crime)

Outcome	Measures
<b>Reductions in A&amp;E attendances and admissions for assaults with a knife or sharp object</b>	Number of A&E attendances and admissions for assaults with a knife or sharp object
<b>Reduction in serious violence offending (including knife/ gun - enabled violence and homicides – adults and young people cohorts)</b>	Number of arrests for serious violence
	Number of charges for serious violence
	Number of referrals to YOT
	Severity of crime per 1,000 population in Cheshire (compared to previous years and compared to figures for England and Wales)
	Knife crime figures as defined by the Home Office Annual Data Requirement
	Gun crime figures as defined by the Home Office Annual Data Requirement
<b>Reduction in serious violence reoffending (including knife-enabled violence and homicides)</b>	Number of repeated arrests for serious violence
	Number of repeated charges for serious violence
	Number of repeated convictions for serious violence
<b>Decrease in (reported/known) knife or sharp object carrying</b>	Qualitative and quantitative data (e.g., programme information, surveys, interviews, reported knife carrying, community perceptions, number of recorded crimes for carrying a knife/ weapon)
	% of children that have carried a knife (e.g., Trading Standards survey)
<b>Reduction in serious organised groups in Cheshire</b>	Number of (known) organised groups (e.g., police Organised Crime Group Map data linked to specific crime types – i.e., reductions and disruptions of groups related to the drivers of serious violence, linked to existing Home Office returns data)

Outcome	Measures
<b>Reductions in repeat domestic abuse and violence demand</b>	Number of police call outs for DVA for programme participants
	Number of arrests for DVA
	Number of charges for DVA
	Number of convictions for DVA
<b>Increase in referrals to DA programmes</b>	Numbers of people who complete DA programmes
<b>Reduced child to parent domestic abuse / violence</b>	Number of reported incidents
	Number of child and families engaged with targeted interventions.
	Parents self-report, child self-reports
<b>Impact of high harm, high risk domestic abuse SDAP programme.</b>	Number of interventions recorded by SDAP co-ordinators
<b>Increase in feelings of support for victims</b>	Qualitative data (e.g. programme information, surveys, interviews, focus groups)
<b>Increased feelings of safety (at home and in neighbourhoods)</b>	Qualitative and quantitative data (e.g. programme information, surveys, interviews, reported crime, community perceptions)
<b>Successful community reintegration from prison</b>	Reoffending data
	Offender accommodation status
	Offender employment status
	Offender substance misuse support / engagement

Outcome	Measures
<b>Reduction in youth anti-social behaviour/ youth offending and unnecessarily criminalising children</b>	Number of youth anti-social behaviour incidents / report
	Number of recorded offences
	Number of first-time entrants in the criminal justice system
	Number of Out Of Court Resolutions for young people
<b>Agencies work together to identify children who are at risk of, or affected by, serious youth violence, including children who are exploited. They intervene to reduce risk and provide support for children; they effectively monitor the impact of interventions so that risk is reduced</b>	Number of children identified
	Number of interventions delivered
	Number of risk / protective factors: professional judgements
<b>Cases of serious youth violence and exploitation are investigated effectively. The safeguarding needs of all children are addressed</b>	Measures to be agreed with Partners
<b>Increase in access to and engagement with therapeutic approaches (cognitive, behavioural, social or psychosocial) for young people at greatest risk of becoming involved or already involved in violence</b>	Number of therapeutic programmes and other interventions, number of people engaged, programme data, interviews capturing young people's experiences, (e.g., professional response, use of support materials, family and child experience of support)
	Further measures to be agreed
<b>Increase in restorative support for people involved in violence</b>	Number of restorative programmes, number of people engaged, programme data, interviews capturing people's experiences
<b>Reduction in child negative behaviours</b>	Number of young people successfully completed a mentor programme

## Strategic priority 1: Prevention (education)

Outcome	Measures
<b>Schools/education providers have effective systems to identify children at risk of, or subject to, serious youth violence and/or exploitation and children who are missing from school</b>	Evidence of effective systems to identify children at risk within schools /education
	Timeliness of referrals to appropriate support, early help, or children's social care
<b>Schools/education providers work to raise awareness and understanding of the risks of serious youth violence and exploitation</b>	Qualitative and quantitative data (e.g, interviews, focus groups, surveys, multi-agency data)

## Strategic priority 1: Prevention (health)

Outcome	Measures
<b>Improvements in mental health, physical health, wellbeing, and quality of life</b>	Estimated prevalence of mental health disorders in children and young people: % population aged 5-16
	School pupils with social, emotional, and mental health needs: % of schools with social, emotional, and mental health needs (persons, primary / secondary school age)
	Numbers of hospital admissions for mental health conditions in 0-17-year-olds (e.g, Public Health Outcomes Framework data and child health profile)
	Number of hospital admissions as a result of self-harm
	Number of hospital admissions caused by unintentional and deliberate injuries in children (ages 0-4 and 0-14) and young people (age 15-24) (e.g, Public Health Outcomes Framework data and child health profile)
	Number of court ordered mental health treatment requirements

Outcome	Measures
<b>Reductions in substance 'misuse' and alcohol issues</b>	Hospital admissions for substance 'misuse' (alcohol, drugs- illicit and non-illicit substances)
	Hospital admission episodes for alcohol specific conditions
	Numbers of children / young people / adults with unmet substance misuse needs
	Numbers in engaged with substance misuse services
	Number of drug and/or alcohol court ordered treatment requirements
<b>Identification of young people living in households with DA, MH, Substance misuse, and ensuring suitable support is provided</b>	Identification measures to be agreed with partners
	Number of interventions available
	Number of young people engaged with intervention
<b>Minimise the impact of deprivation for children in at risk families</b>	Children in low-income families
	Availability of activity programmes for children
<b>Health practitioners, including those in ambulance services respond to the immediate needs of children presenting with injuries that may indicate they are victims of, or at risk of, serious youth violence</b>	Number and timeliness of referrals from health practitioners to multiagency partners

## Strategic priority 1: Prevention (education and employment)

Outcome	Measures
<b>Increased access to education and training opportunities</b>	Numbers of people in education and training, education data, self-reports, specific programme data
<b>Increased engagement in education and training opportunities</b>	16–17-year-olds not in education, employment, or training (NEET) or whose activity is not known (persons 16-17 years)
	Qualitative data (e.g. programme data; interviews)
	Numbers of young people successfully completing Princes Trust programme
<b>Improved child school attendance</b>	16–17-year-olds not in education, employment or training (NEET) or whose activity is not known (persons 16-17 years)
	Local schools' data; programme participant data
<b>Partners work together to reduce school and higher education exclusions</b>	Secondary school fixed period exclusions: rate per 100 pupils (persons, secondary school age)
	Fixed period exclusions due to persistent disruptive behaviour: rate per 100 pupils (persons, secondary school age)
	Primary school fixed period exclusions: rate per 100 pupils (persons, secondary school age)
	Persistent absentees and number of permanent exclusions

## Strategic priority 2: Workforce development

Outcome	Measures
<b>Increased application of a trauma informed and child centred approach</b>	Numbers of professionals receiving trauma informed training.
<b>Professionally curious culture and workforce</b>	Number of staff trained by organisation
	Case file audit
	Professional survey, focus groups or interviews
<b>Improved recognition and knowledge of trauma and how it can affect people differently</b>	Training feedback / professional / public survey
<b>Improved support to those disclosing trauma</b>	Lived experience qualitative feedback, number of people who feel better supported to disclose
<b>Improved professional confidence in identifying and supporting people who have experienced trauma</b>	Professional survey, focus groups or interviews
<b>Reductions in re-traumatisation</b>	Lived experience and professional perspectives
<b>Improved service from lived experience perspective</b>	Lived experience – young people / adults and professional perspectives
<b>Assessments show that the experiences, strengths and needs of children are well understood. Strengths and risks within the family and address risk to, and the protective capacity of, other children, including siblings and peers</b>	Strength based training completed by professionals. Case file audit – for risk / protective factors. Multiagency response
	Case file audit – for risk / protective factors. Multiagency response
<b>Assessments are timely, include contributions from all relevant agencies and consider extra-familial harm, including risks online</b>	Timeliness of assessment
	Case file audit – for risk / protective factors

Outcome	Measures
<b>Children's views are clearly recorded and central to a multi-agency response</b>	Qualitative data / Case file audit
<b>Effective support to professionals exposed to trauma</b>	Professional feedback (quantitative and qualitative, e.g., through surveys, focus groups and interviews)
<b>Improved trust and respectful relationships between 'service users' and professionals</b>	Lived experience and professional survey data
<b>Increase / improvements in quality of interagency working</b>	Qualitative and quantitative data (e.g., interviews, focus groups with professionals, case records, programme data)
<b>Increased knowledge of support services (for public and professionals)</b>	Qualitative and quantitative data (e.g., interviews, focus groups and programme data)

### Strategic priority 3: Intelligence-led and practice commissioning

Outcome	Measures
<b>Partners target resources on prevention and early intervention, using evidence-based approaches. This includes work with the community, businesses, education providers, parents, and children</b>	Number of commissioned interventions across the partnership
	Evidence of use and understanding of the Youth Endowment Fund and other evidence-based tools to inform commissioning decisions across all partnership groups
<b>Partners share and analyse information effectively</b>	Quality and timeliness of multiagency information sharing
	Use of multi-agency data analysis and audits/ reviews


Outcome	Measures
<b>Partners target resources on prevention and early intervention, using evidence-based approaches. This includes work with the community, businesses, education providers, parents, and children</b>	Number of commissioned interventions across the partnership
	Evidence of use and understanding of the Youth Endowment Fund and other evidence-based tools to inform commissioning decisions across all partnership groups
<b>Partners share and analyse information effectively</b>	Quality and timeliness of multiagency information sharing
	Use of multi-agency data analysis and audits/ reviews
<b>Partners understand: the prevalence of serious youth violence the localities where children may be at risk; the demographics of perpetrators and victims (including issues of disproportionality such as ethnicity, disability, or gender); and the experiences of children</b>	Qualitative partner data relating to demographics
	Use of multi-agency data analysis
	Qualitative feedback, questionnaires, focus groups, surveys of young people and professionals
<b>Relevant partners are involved and understand the aim of interventions and the intended outcomes</b>	Evidence of alignment of priorities and funding
	Partnership involvement in review of SVD priorities and commissioned interventions
<b>Children, places, and spaces are safer and meets the need of the community</b>	Qualitative data, lived experience feedback, surveys
<b>Partners evaluate interventions and use that learning to continually improve</b>	Evidence of intervention evaluation data

# Stay in touch

 [www.cheshire-pcc.gov.uk](http://www.cheshire-pcc.gov.uk)

 [pcc@cheshire-pcc.gov.uk](mailto:pcc@cheshire-pcc.gov.uk)

 01606 364000

 Cheshire Police and Crime Commissioner  
Runcorn Town Hall  
Heath Road  
Runcorn  
WA7 5TD

